

3. To mark the curve of the 8-meter arc, measure from the center of the goal line (D) 34 feet, 10 inches (10.6 meters) to G connecting the sidelines. The arc will now be 8 meters from the circle.
4. The center hash mark 1 foot (30.5 centimeters) on the 8-meter arc shall be measured from the center of and perpendicular to the goal line (34 feet, 10 inches/10.6 meters). The other hash marks will be measured 4, 8, and 12 meters respectively from either side of the center hash mark. Two additional hash marks will be made 8 meters from the goal circle, perpendicular to the goal line extended.

12-METER FAN (Diagram 2)

Inscribe a semicircle (E) from the center of the goal line (D) 47 feet, 9 inches (14.6 meters). The flat side of the semicircle should be marked from the points on the goal circle (B) to the semicircle.

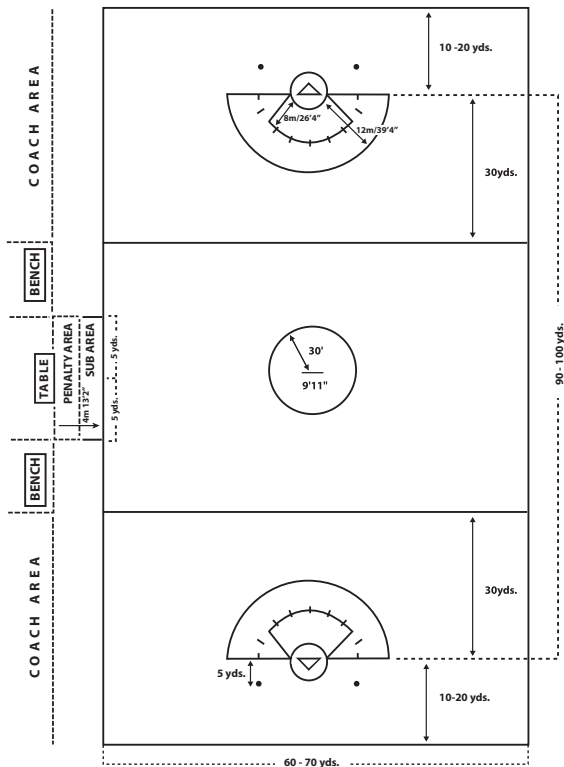


Diagram 3 – Field Diagram (Not Drawn to Scale)



Boys and Girls Unified Field Diagram (120 yards)

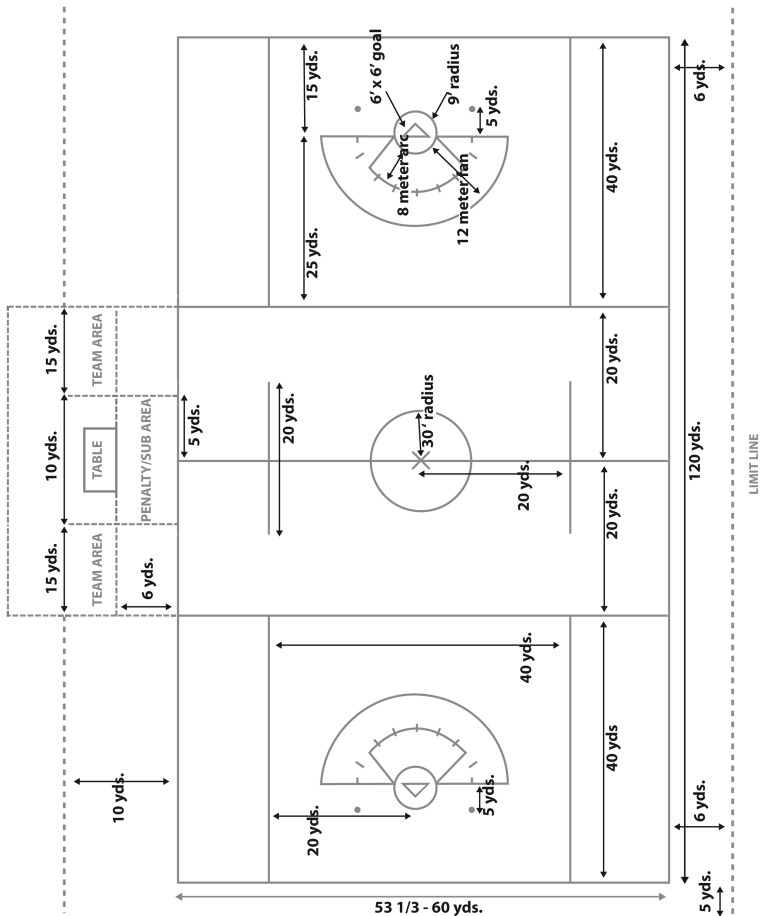


Diagram 4

(Not Drawn to Scale) - 2025